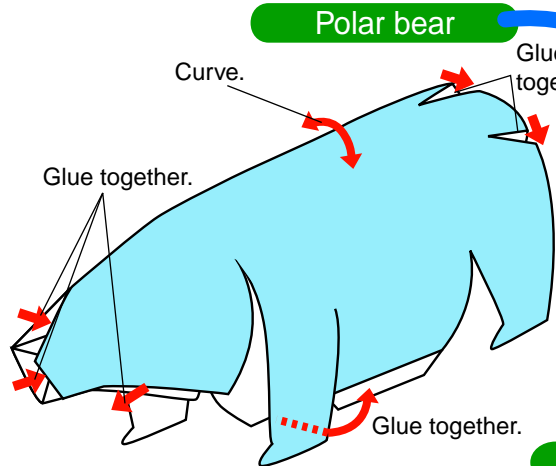


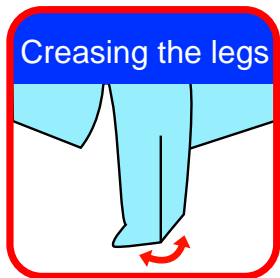
The Arctic is the region centered on the North Pole, and extending south to 66° 33' north latitude.

This is a very harsh area to live in, but the animals that call this place home have bodies that are well adapted to the severe climate.

Print out this pattern, cut out the pieces, and assemble as shown in the diagram. It may be easier to cut widely around each part first, then trim the parts carefully. Don't worry if you can't cut too closely around some of the fine details.

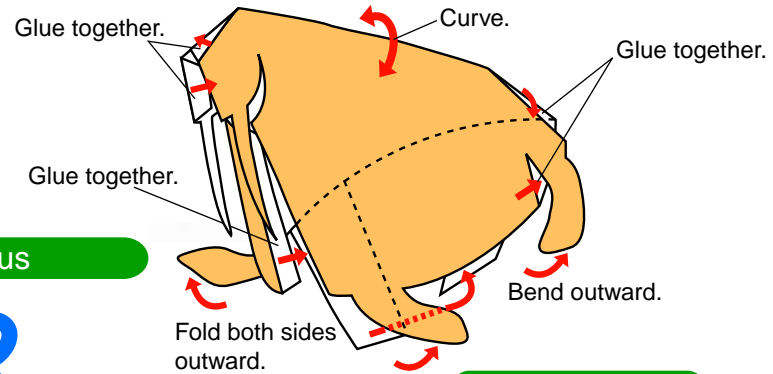


Polar bear



Crease the legs of the polar bear and reindeer to give them a bit of a curve, as shown above. This will strengthen the legs and allow the animals to stand up well.

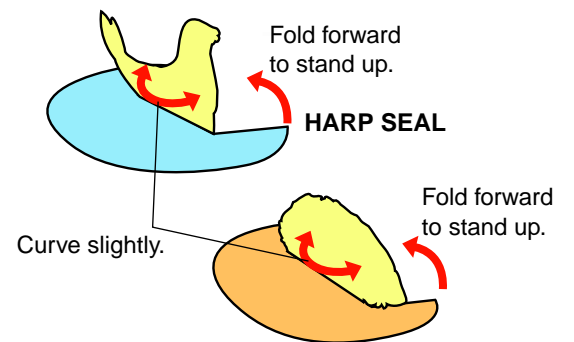
Walrus



Reindeer

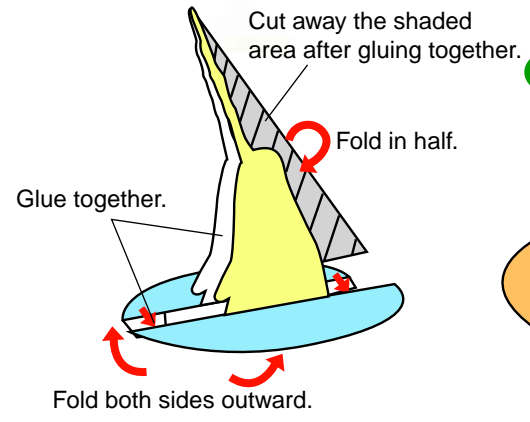


Harp seal and collared lemming

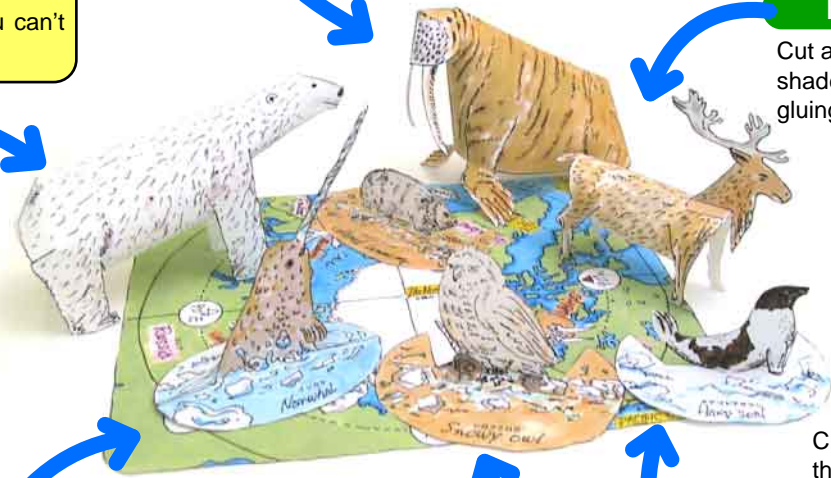
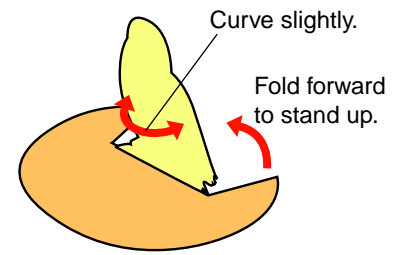


COLLARED LEMMING

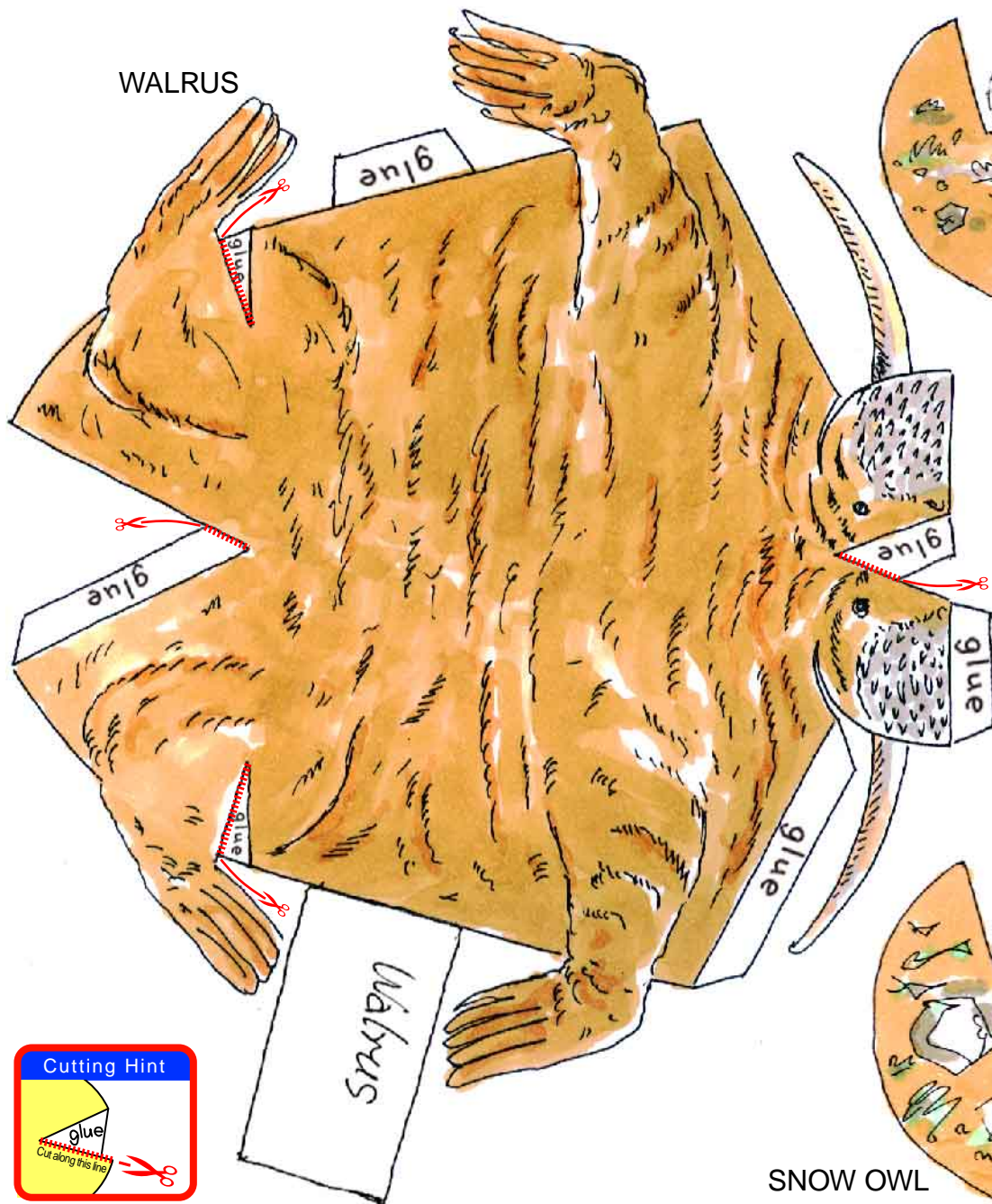
Narwhale



Snow owl



Completed model



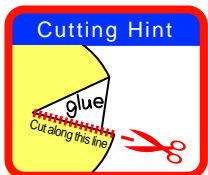
COLLARED LEMMING



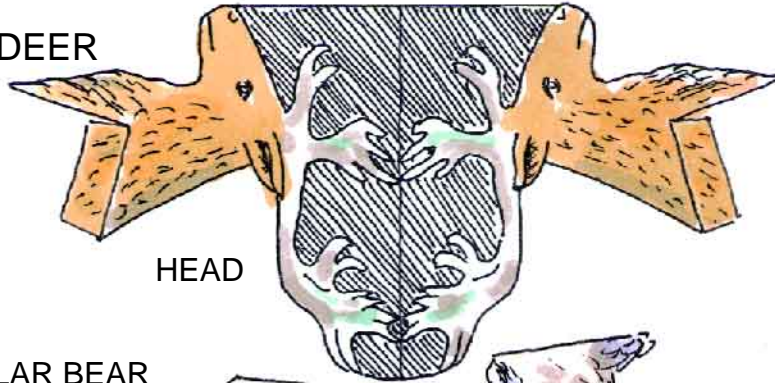
HARP SEAL



SNOW OWL

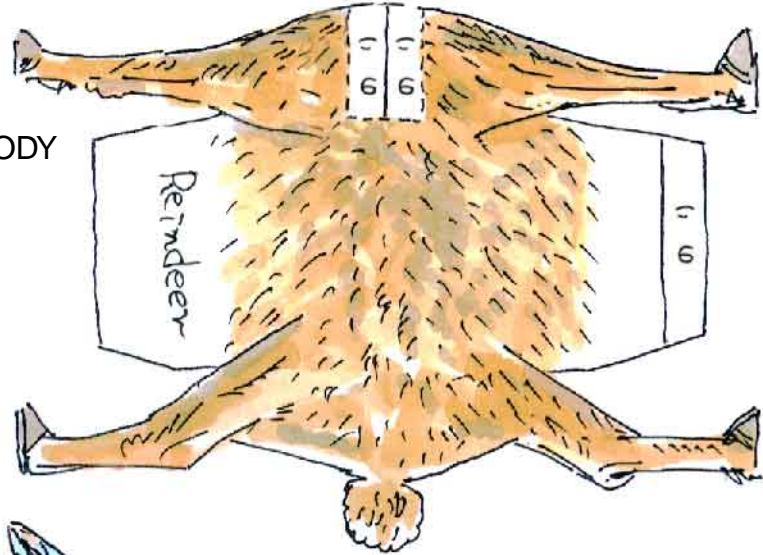


REINDEER

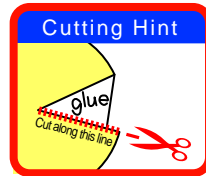
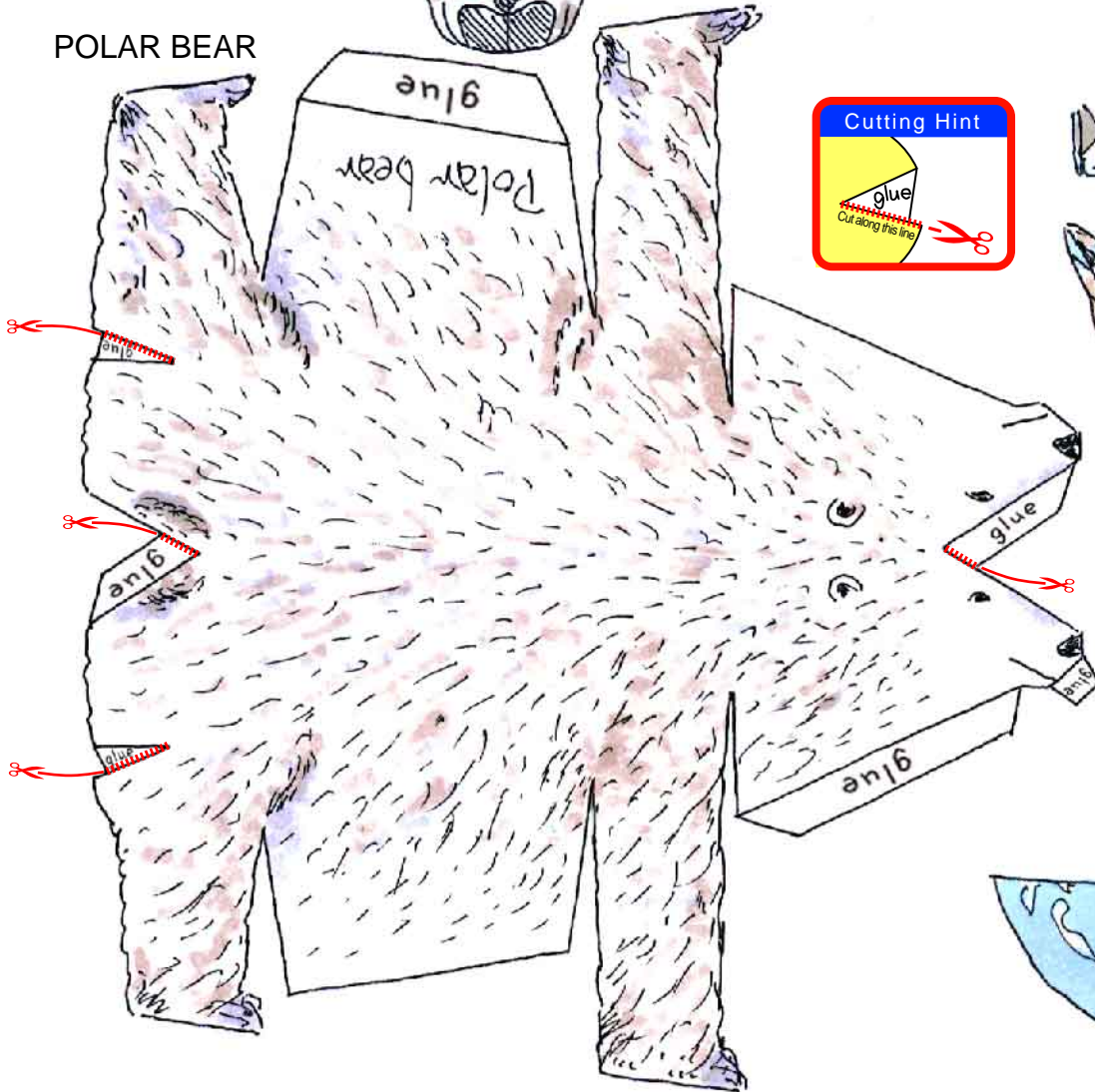


HEAD

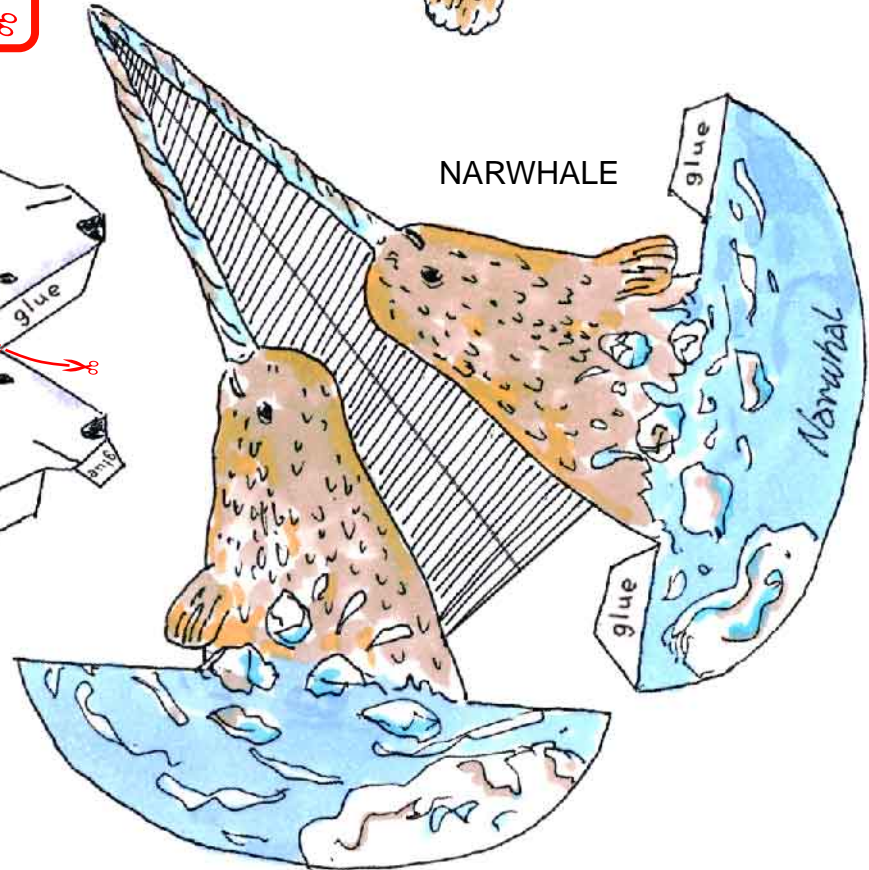
BODY



POLAR BEAR



NARWHAL



MAP

